



NEAREST WP 6: Paleotsunami and Paleoseismic records

RECENT SUPERFICIAL FORMATIONS ALONG MOROCCAN SHORE LINE

Examples from mediterranean and atlantic coasts

**M. BENAMMI¹, A. BIROUK², M. HAFID¹, A. EL MOURAOUAH²,
E. TOTO¹, A. IBENBRAHIM² and M KASMI²**

1: Université Ibn Tofail - Département de Géologie- Kénitra – Morocco

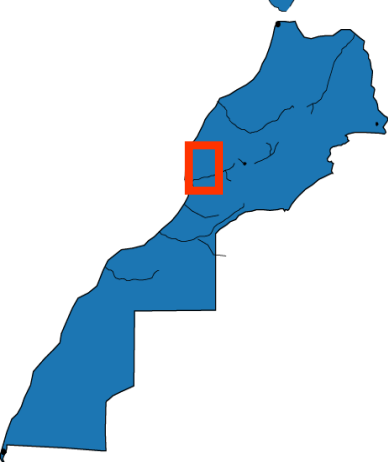
2: CNRST- Institut National de Géophysique – Rabat - Morocco

NEAREST meeting Lisbon 17 & 18/05/2007



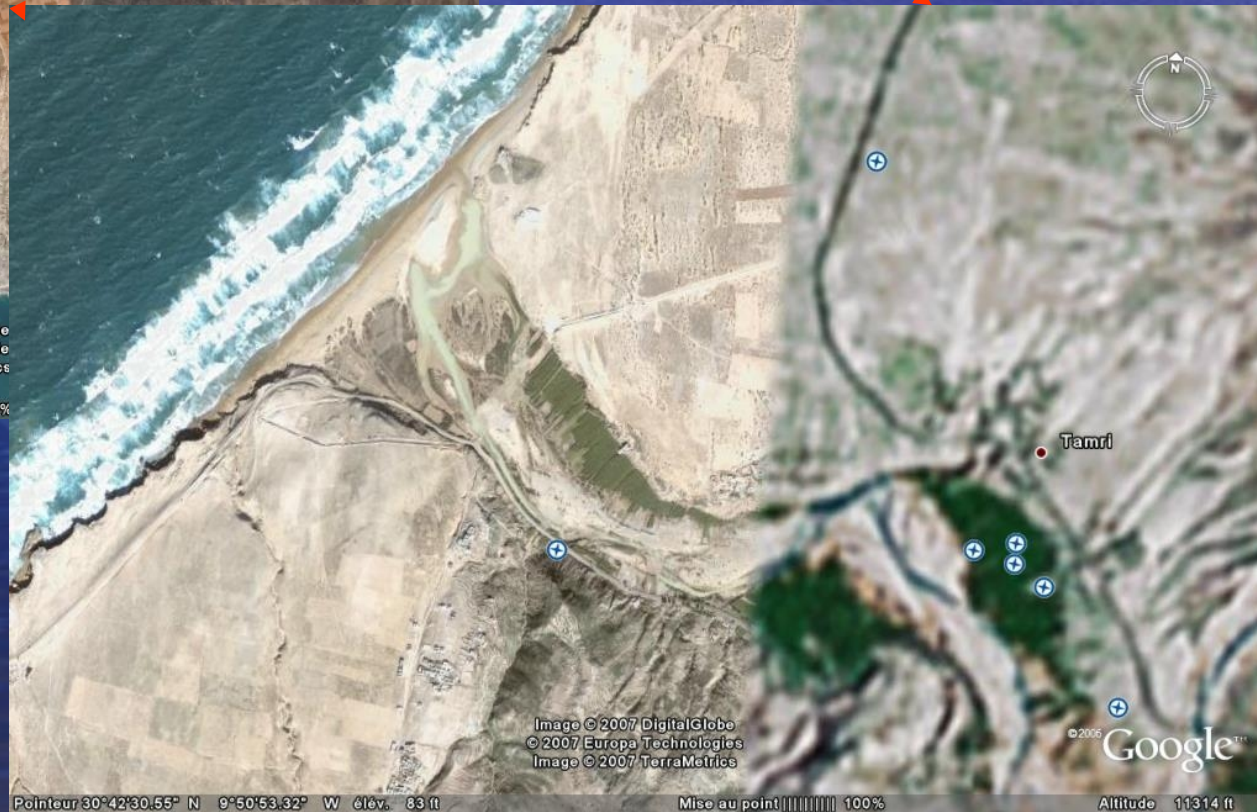
Objective

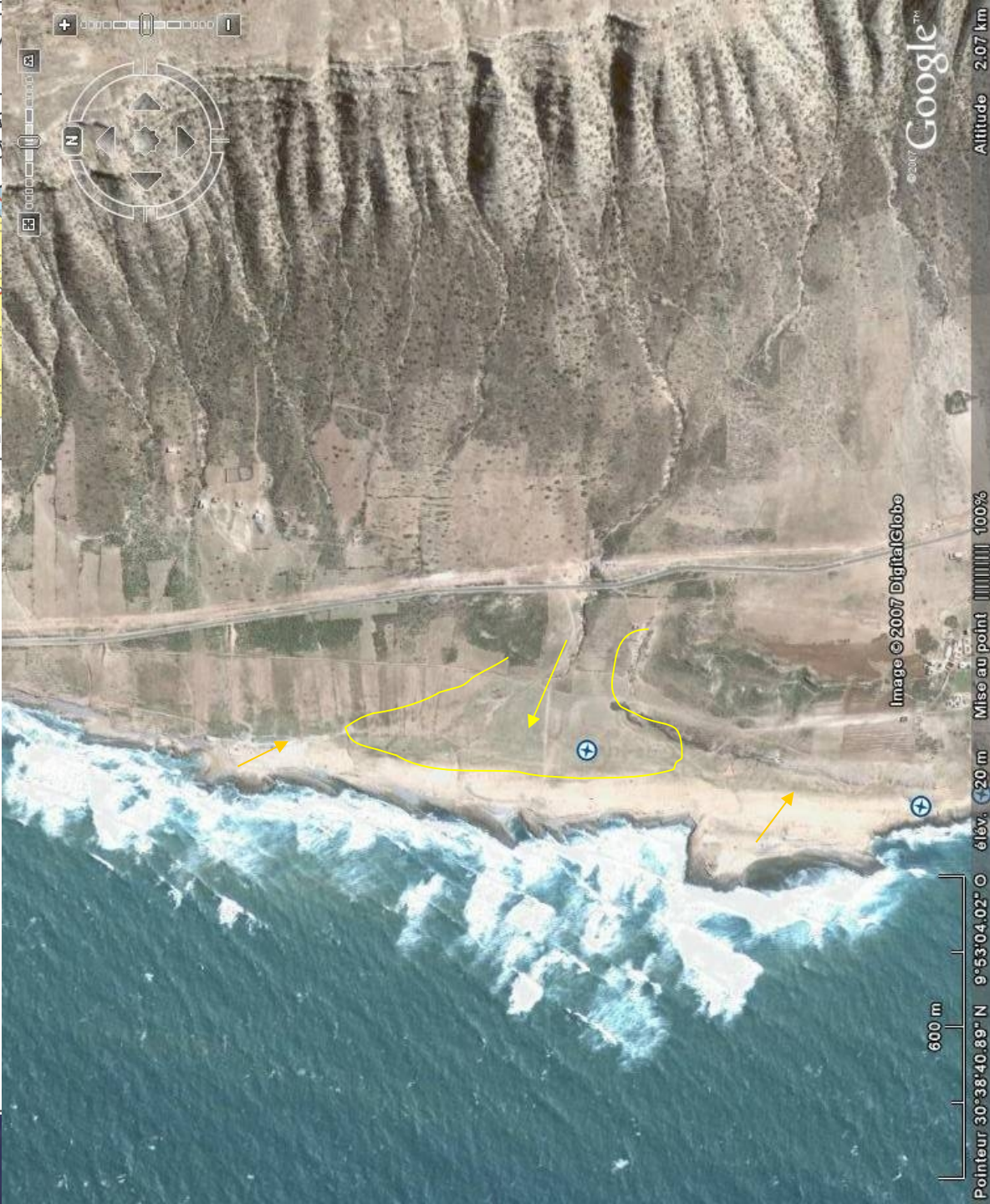
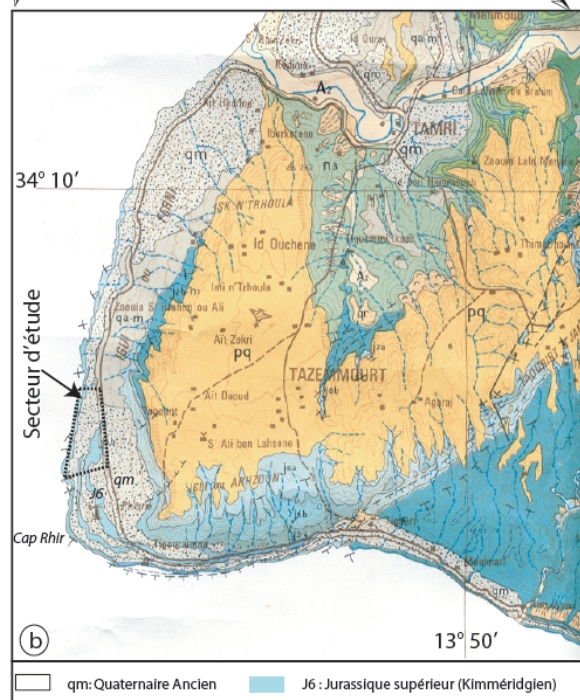
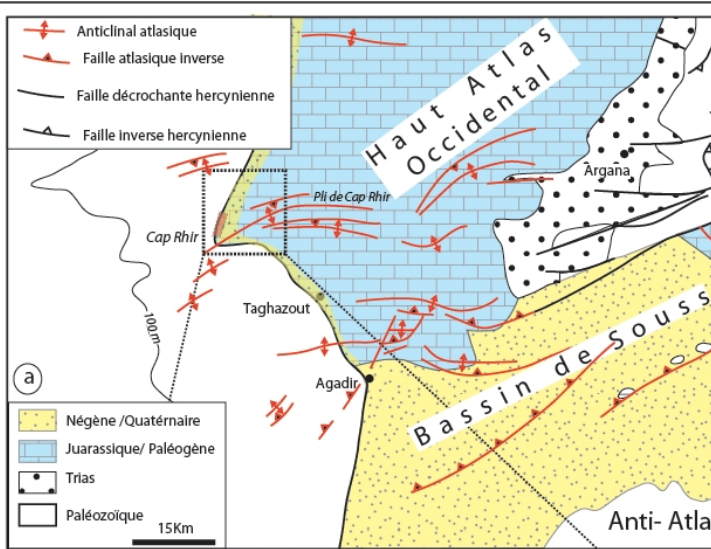
- Show examples of recent deposits from Mediterranean and Atlantic Moroccan coasts
- This kind of study could represent a framework for further investigations for Tsunami deposits

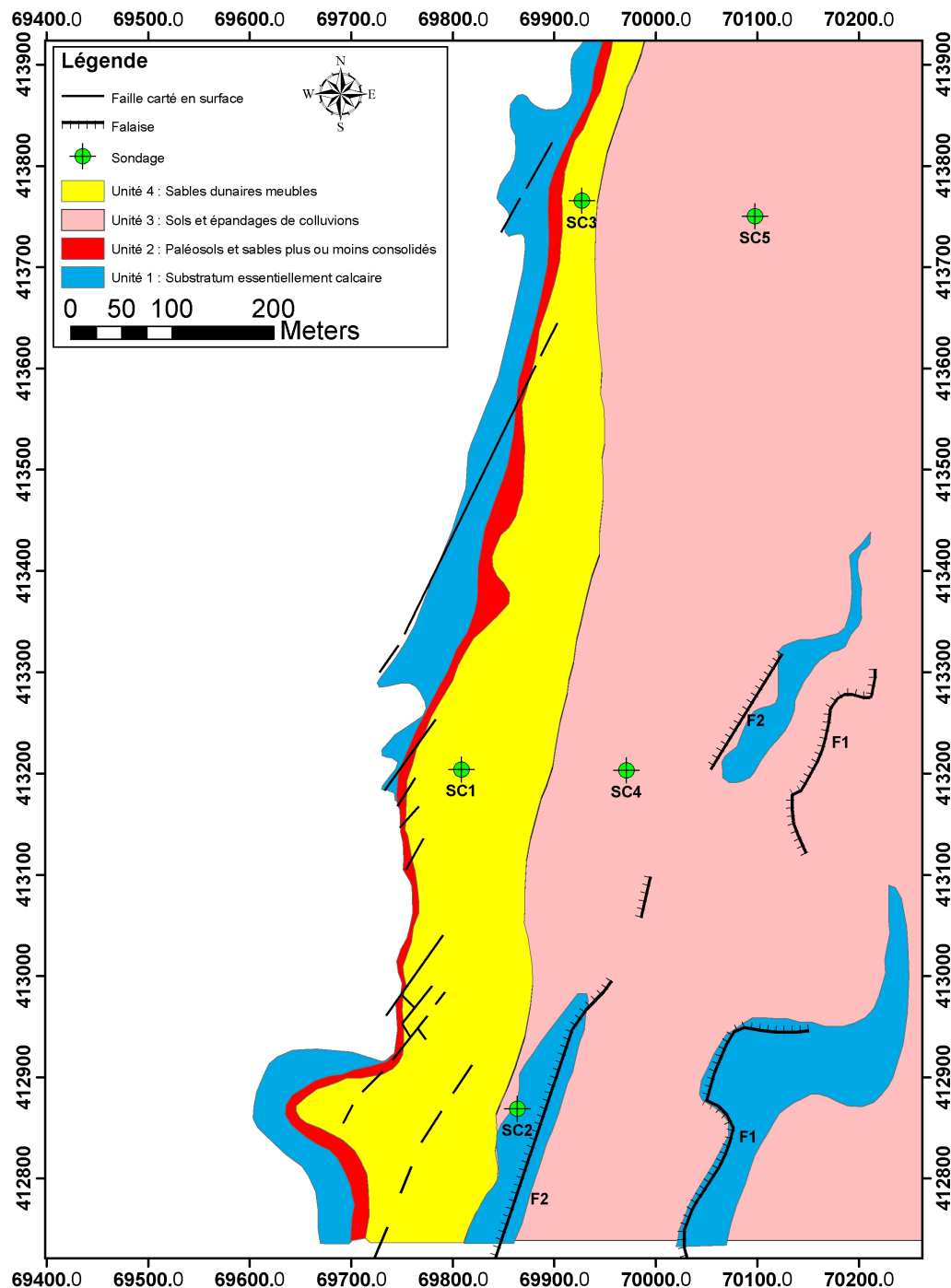


OUED TAMRI
MOUTH

**The study of recent
formations in the
nearby Cap Rhir area
could help in
investigating for
eventual Tsunami
deposits in the Oued
Tamri mouth**







Four lithostratigraphic units were defined in the Cap Rhir Site:

Unit 1: Jurassic bedrock

Unit 2: Conglomerats with a sandy-clayey matrix containing continental gasteropdes, sandstones and to the top sandy or clayey redish to brownish soils that contain beach gravels and shells.

Unit 3: Colluviums and recent soils

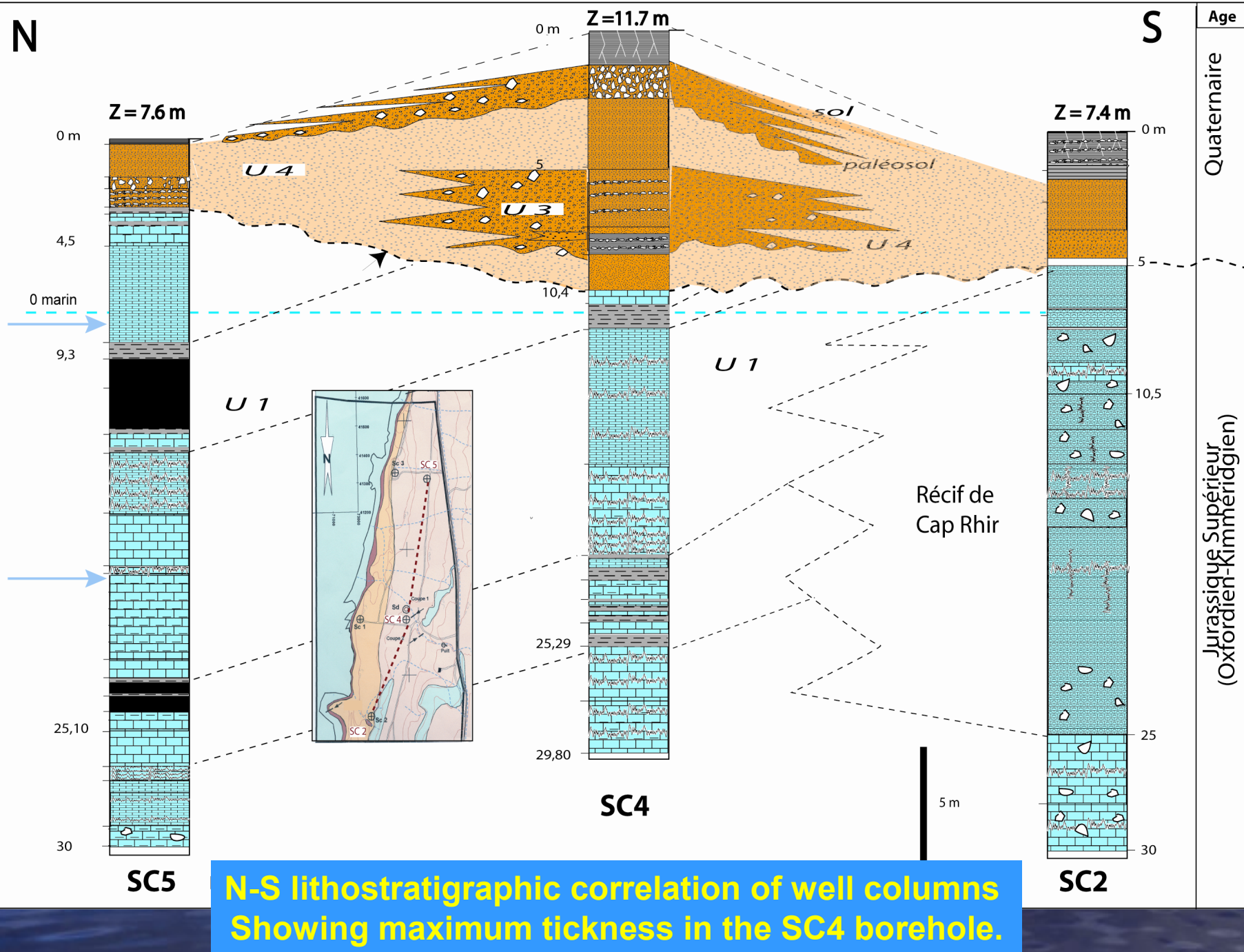
Unit 4: Actual dunes of loose sands

N

S

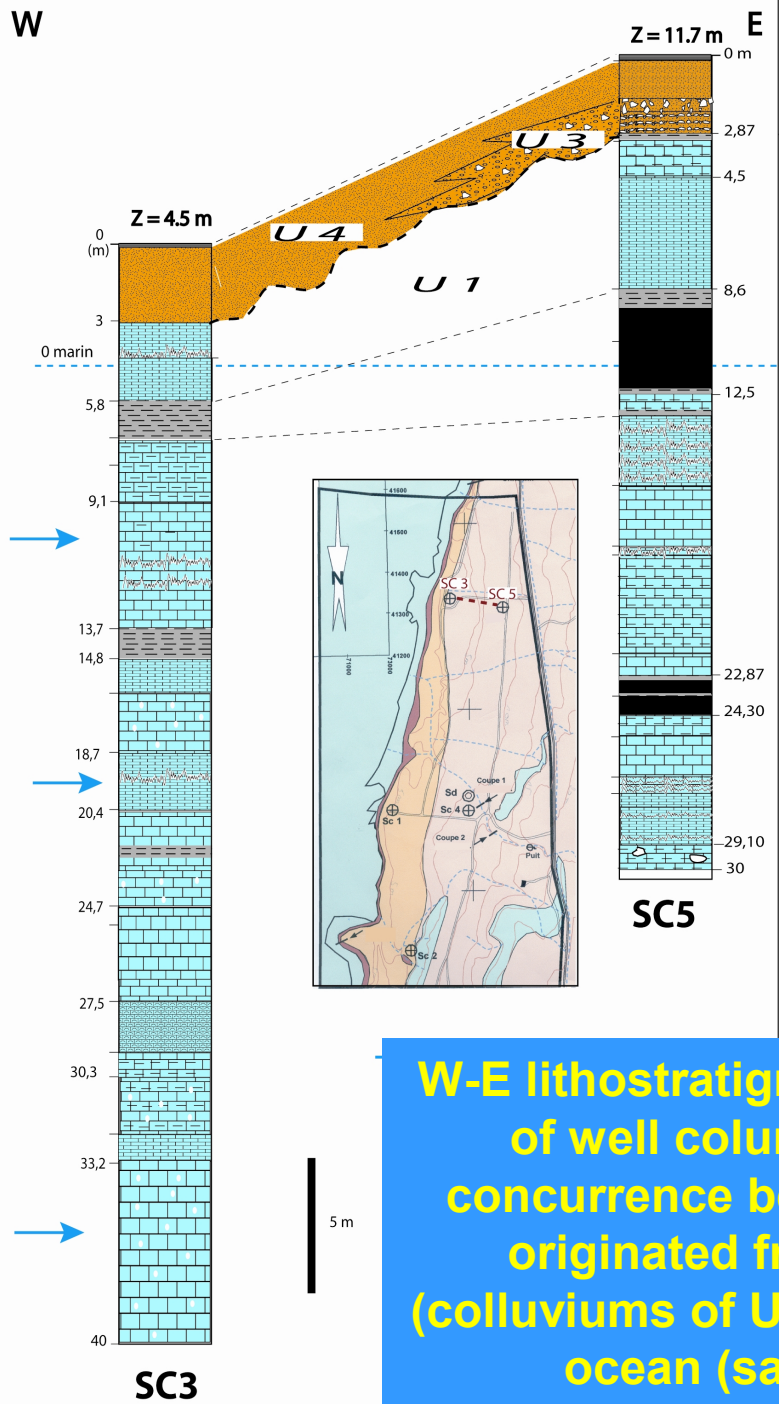
Age

Quaternaire

Jurassique Supérieur
(Oxfordien-Kimmeridgien)

**N-S lithostratigraphic correlation of well columns
Showing maximum thickness in the SC4 borehole.**

W

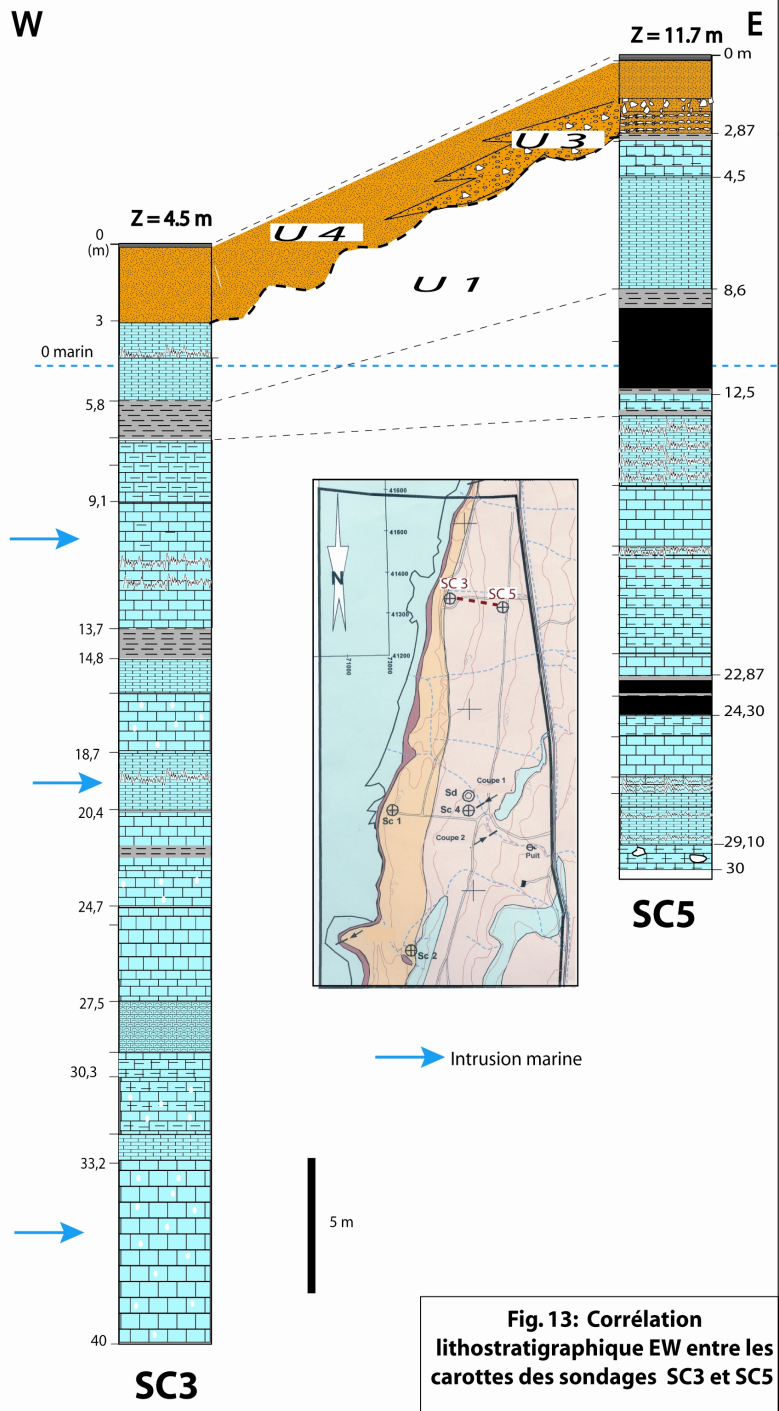


Quaternaire

Jurassique Supérieur
(Oxfordien-Kimmeridgien)



W-E lithostratigraphic correlation of well columns Showing concurrence between deposits originated from continent (colluviums of U3) and those from ocean (sands of U4).

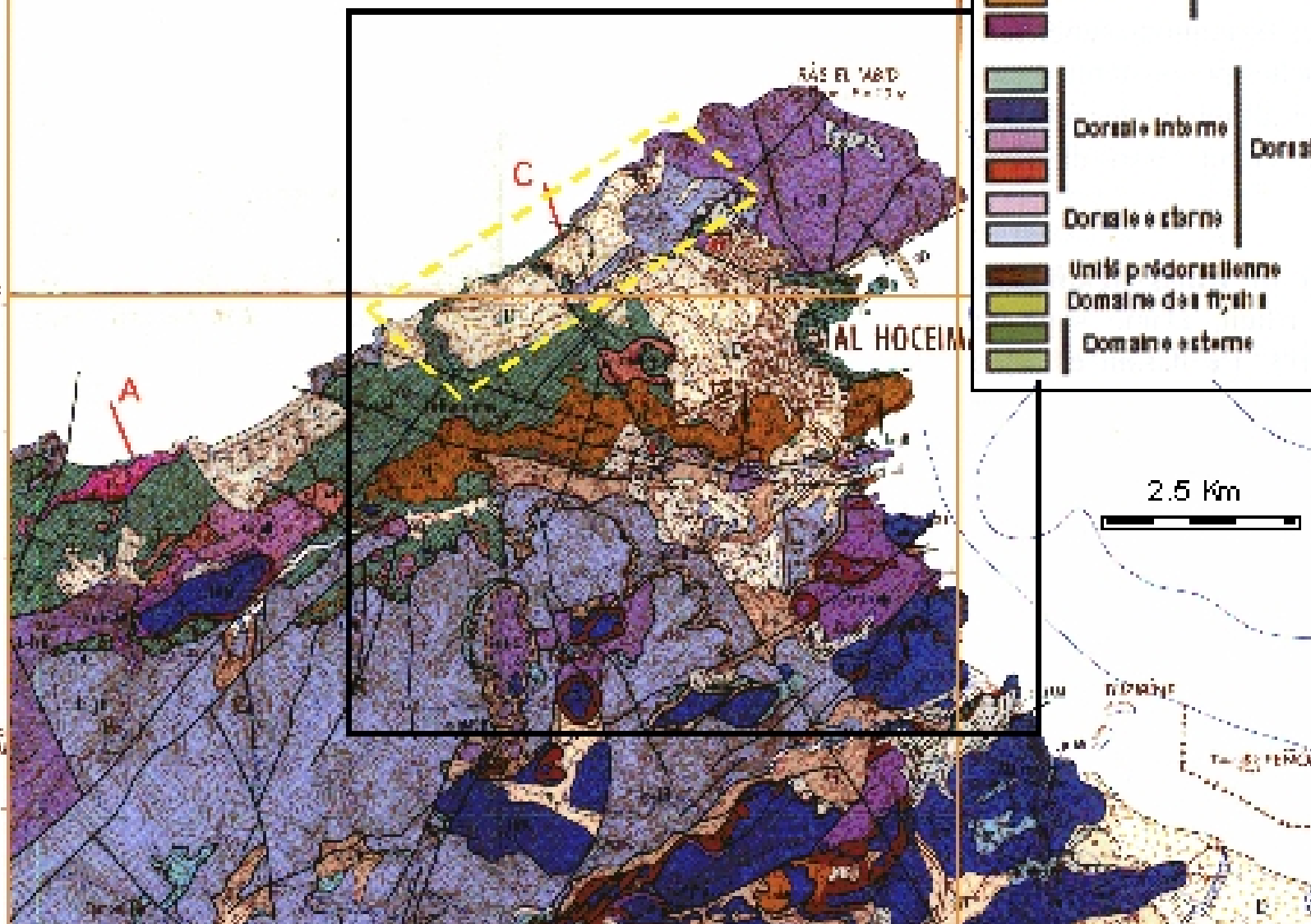


Quaternaire

Jurassique Supérieur (Oxfordien-Kimmeridgien)

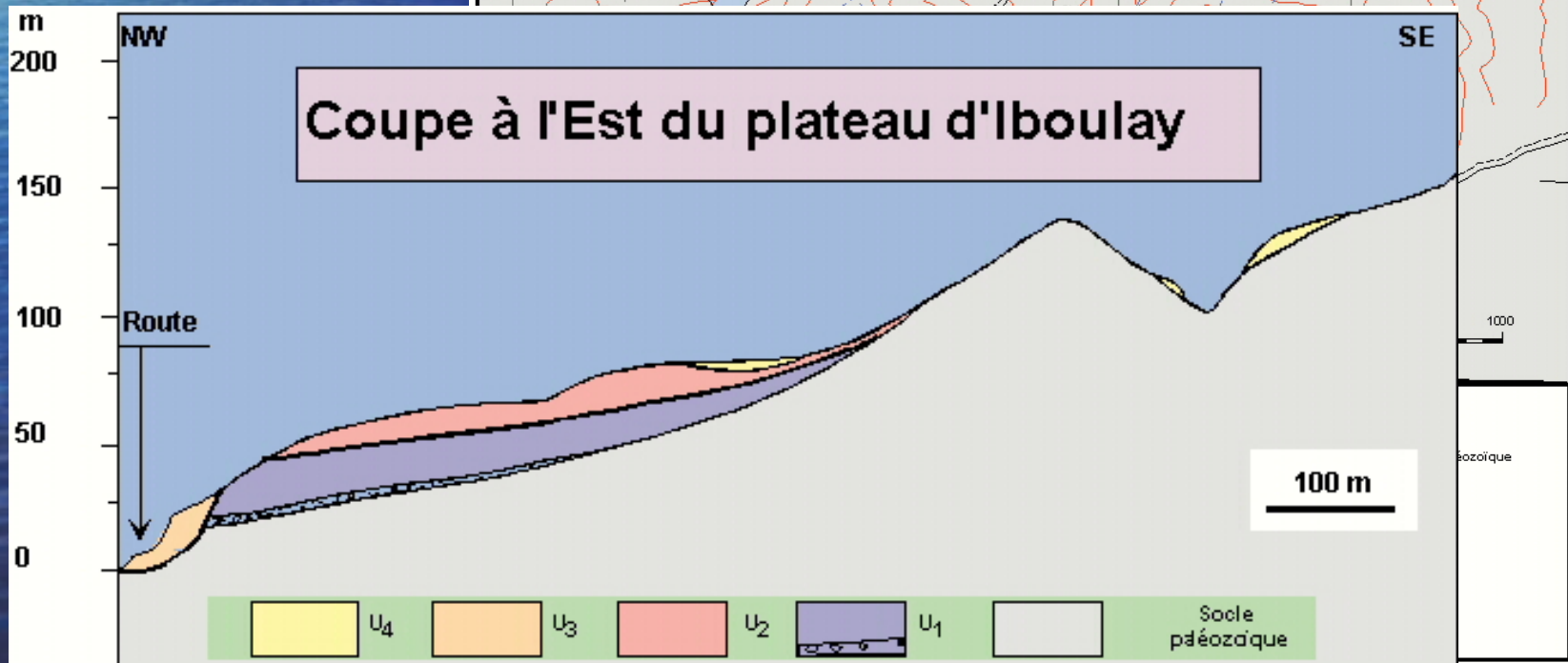
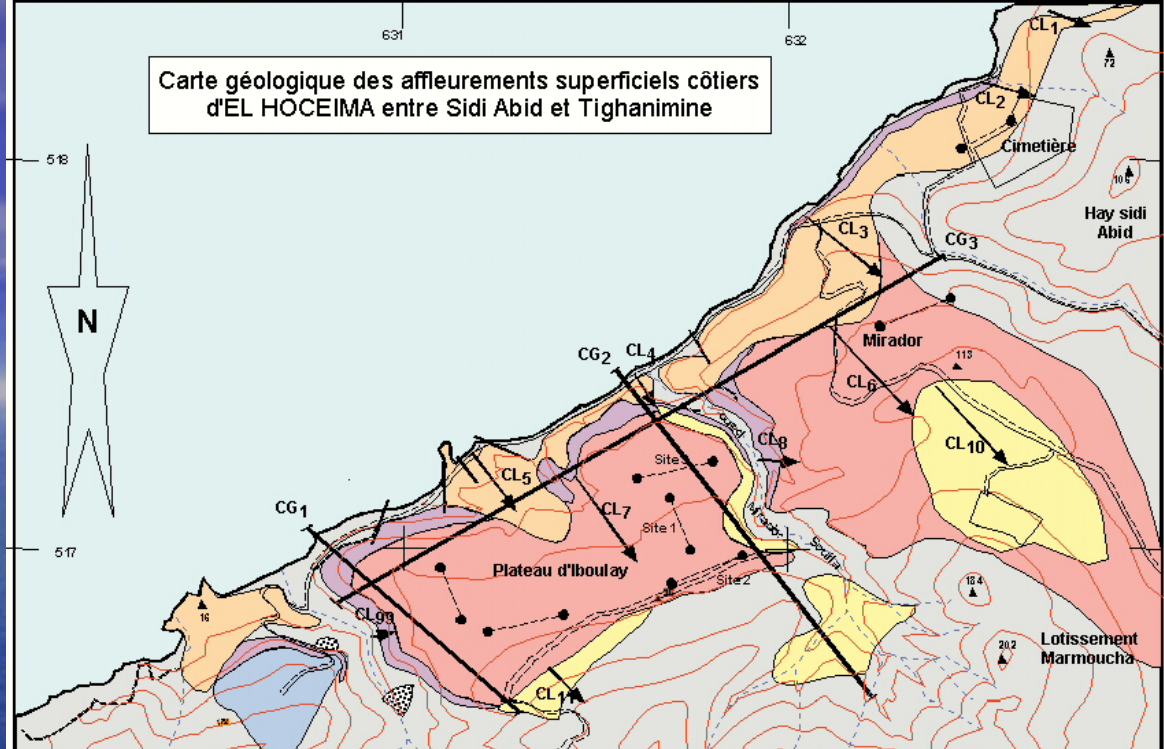


Geologic Map of the Al Hoceima Region



Geological Map of Recent Sedimentary units, Alhoceima

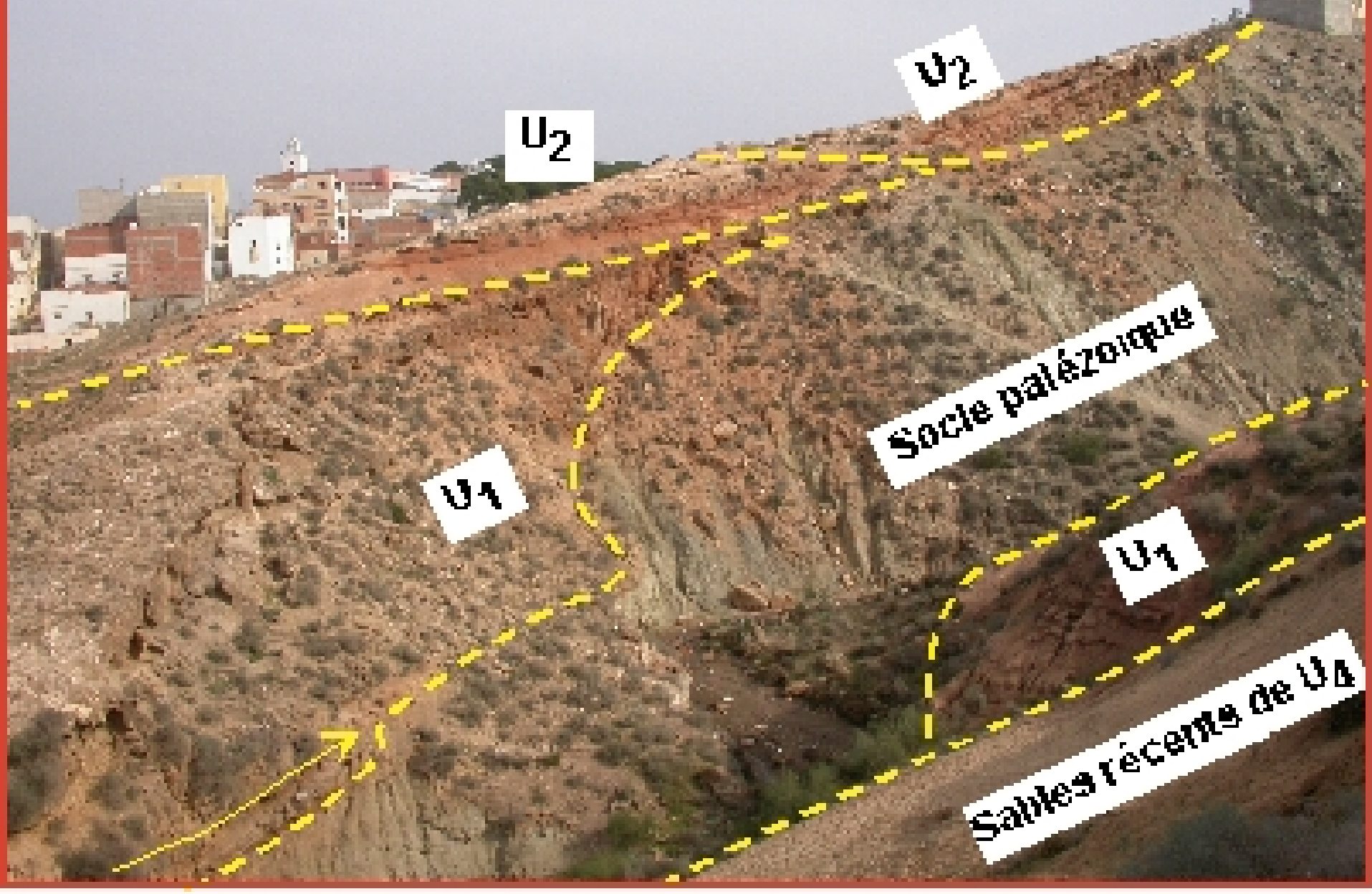
Four units differentiated by their facies, degree of compaction and spatial relationships




NW

SE

Plateau du Mirador





A sunset scene over a dark, rocky landscape. The sun is low on the horizon, casting a warm glow across the sky. The foreground is dark and textured with rocks and sparse vegetation. The ocean is visible in the distance, meeting the horizon line.

Thank you for your attention