

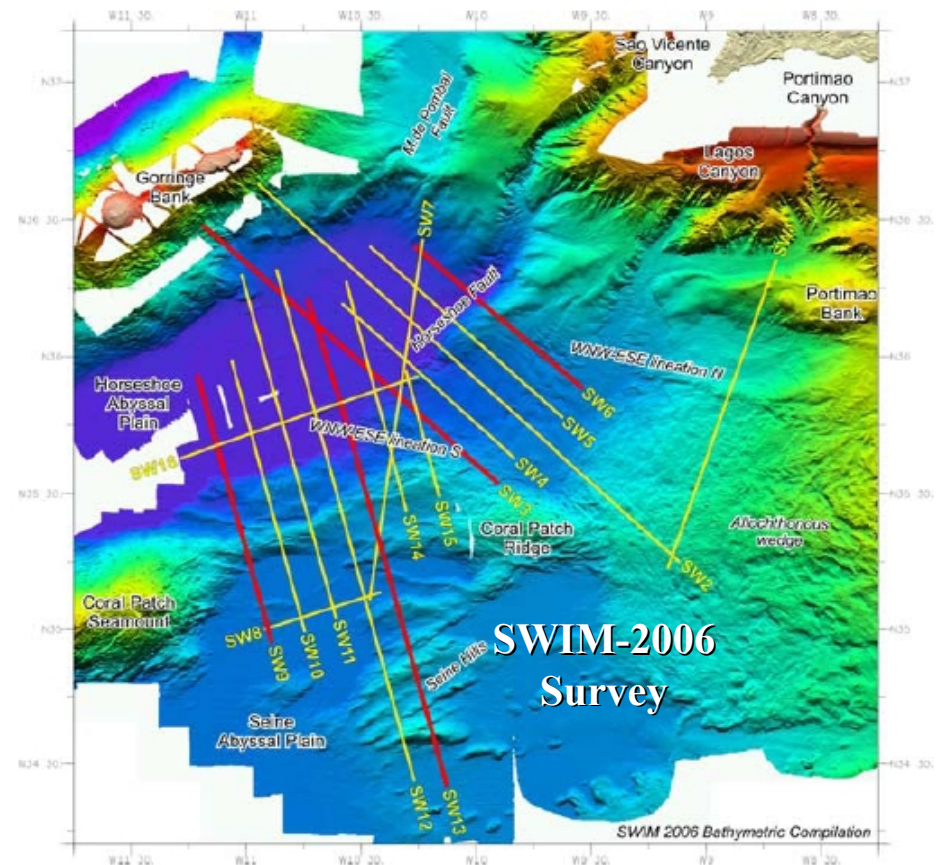
6 Month Report on WP2: Tsunami source characterisation

WP Leader:



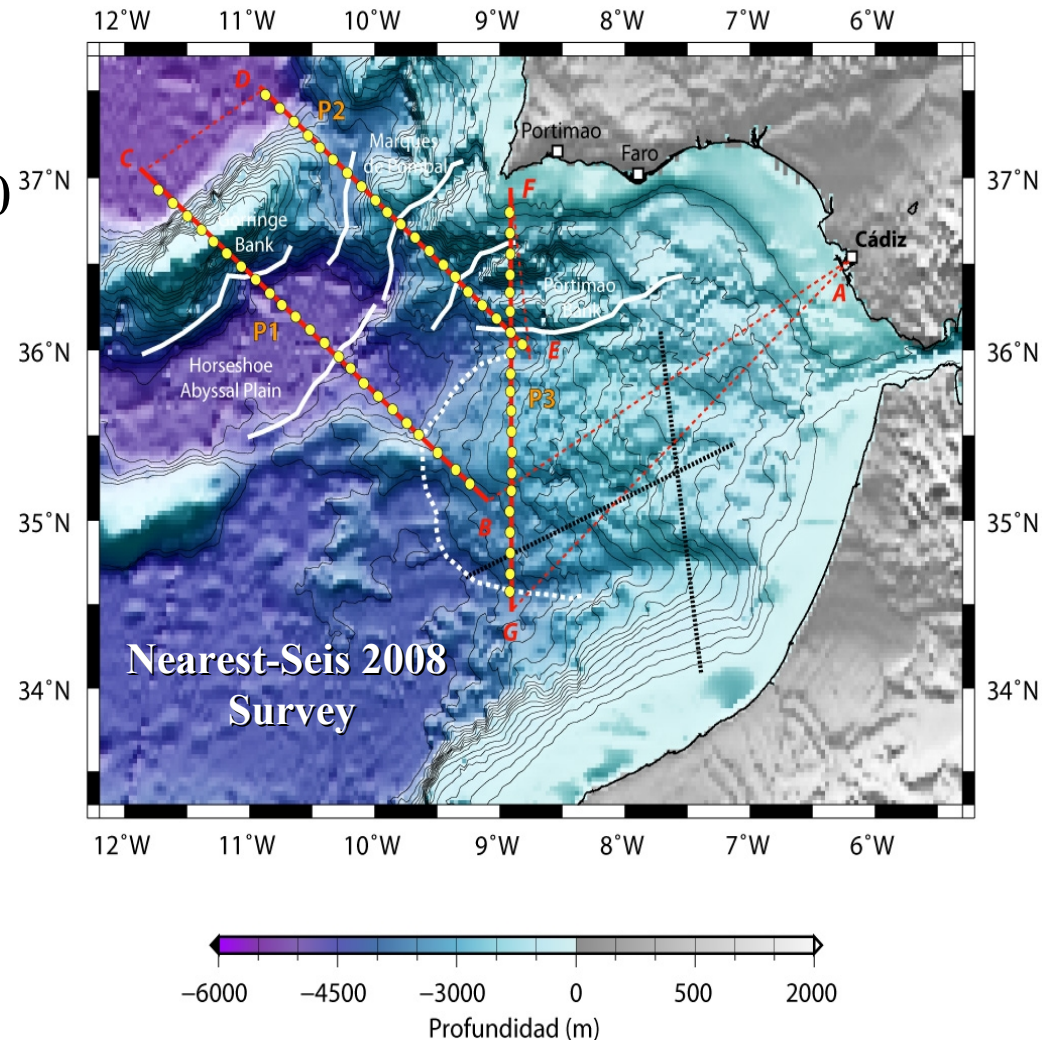
Activities (1):

- Request for one year-contract to start a PhD. Will be extended to 3 years.
- Start processing and interpretation SWIM-2006 lines.
- Application to perform PSDM at IFM-Geomar sent (EU-LSF prog.)



Activities (2):

- Application to get shiptime with Hesperides for Nearest-Seis cruise.
- Application to get 20 IFM-Geomar OBS (60 deploy) for Nearest-Seis cruise (EU-LSF prog.)



Goals:

- SM contract officially started in May 16th.
- The Spanish Complementary Action for the seismic cruise was approved in November 2006.
- Shiptime for Nearest-Seis confirmed: 18 days with Hesperides between Oct. 16 and Nov. 2, 2008.
- LSF application for two PSDM stays at Geomar granted. Stays will be done in October-November 2007.
- LSF application for Geomar OBS failed. No budget available in EU-LSF program for 2008.
- Spanish public tender for the acquisition of OBS (probably 15-20 OBS by the end of 2007).

Open Questions (1):

- Select MCS profiles that should be PSDM. CSIC concentrates on SWIM-2006 profiles.
- What about Rifano (ISMAR), SISMAR (UBO)?
- Make inventory of available OBS within NEAREST group. CSIC hopes to have 15-20.
- Alternatives to get other OBS once LSF proposal failed.
Example:
 - Hiring GeoPro OBS costs ~80-100 euro/OBS/day.
 - Offering one out of three refraction lines to Geomar to get their instruments for free.

Open Questions (2):

- CSIC needs to extend/delay the schedule of WP2 up to the end of the project (month 36 instead of month 22).
 - D5 (cruise report) delayed to month 27 instead of 14.
 - D6 (velocity models) to month 36 instead of 31.
- To decide what refraction lines will be shot.

Deliverables:

The first deliverable (D4: Depth-migrated MCS profiles) is due in month 18 (April 2008) and this is expected to be completed on time

Report on WP3:

Activity:

- Meeting with TopoIberia team leader J. Gallart, who is deploying 40 BB landstations network in SW Iberia.

Open Questions:

- Decide when and how shoot over the BB network.
- Consider possibility of sharing passive data recorded by BB OBS (Nearest) and landstation (TopoIberia) networks.